

GN 113.7 | Quick release pins

Stainless steel



- 1
- 2
- 3
- 4
- 5
- 6
- 7
- 8
- 9
- 10
- 11
- 12
- 13
- 14
- 15
- 16
- 17
- 18

PIN AND PUSH BUTTON

AISI 303 stainless steel.

BALLS

AISI 420C stainless steel.

SPRING

Stainless steel.

TWO-WING HANDLE

Glass-fibre reinforced polyamide based (PA) technopolymer, black colour, provided with holes for security ring.

WORKING TEMPERATURE

From -30°C to +80°C.

FEATURES AND APPLICATIONS

GN 113.7 ball lock pins are generally used for quick fixation of components or parts to be machined, in particular for elements which need to be removed and reset continuously.

ACCESSORIES ON REQUEST

To optimise the use of these ball lock pins, have been designed:

- ball chains GN 111 (see page 611);
- retaining cables GN 111.2 (see page 612);
- spiral retaining cables GN 111.4 (see page 613).

SPECIAL EXECUTIONS ON REQUEST

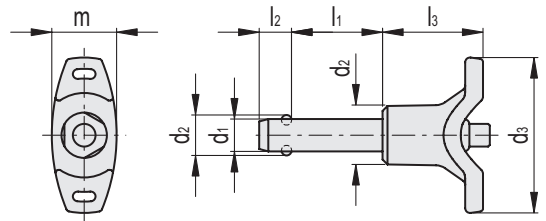
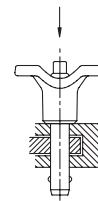
Other dimensions.

INSTRUCTIONS OF USE

By pressing the push button the two balls are freed by exerting a radial retaining action which allows the pin to be engaged or disengaged.



Application example



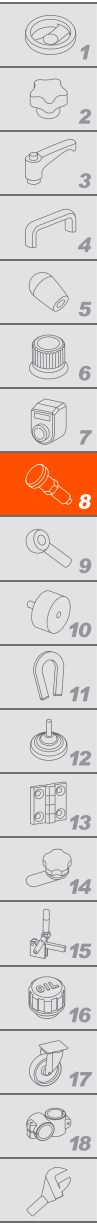
| Code | Description | d1 ^{-0.04 -0.08} | d2 | d3 | d4 | l1 ^{+0.6} | l2 ^{±0.2} | l3 | m | Mounting hole H11 | Double sided shearing force [KN] | ⚖️ |
|----------|---------------|-------------------------------|-----|----|------|--------------------|--------------------|----|------|-------------------|----------------------------------|----|
| GN.38951 | GN 113.7-5-10 | 5 | 5.5 | 40 | 13.5 | 10 | 6 | 25 | 15.5 | 5 | 14 | 15 |
| GN.38952 | GN 113.7-5-15 | 5 | 5.5 | 40 | 13.5 | 15 | 6 | 25 | 15.5 | 5 | 14 | 16 |
| GN.38953 | GN 113.7-5-20 | 5 | 5.5 | 40 | 13.5 | 20 | 6 | 25 | 15.5 | 5 | 14 | 16 |
| GN.38954 | GN 113.7-5-25 | 5 | 5.5 | 40 | 13.5 | 25 | 6 | 25 | 15.5 | 5 | 14 | 17 |
| GN.38955 | GN 113.7-5-30 | 5 | 5.5 | 40 | 13.5 | 30 | 6 | 25 | 15.5 | 5 | 14 | 18 |
| GN.77801 | GN 113.7-5-35 | 5 | 5.5 | 40 | 13.5 | 35 | 6 | 25 | 15.5 | 5 | 14 | 18 |
| GN.77802 | GN 113.7-5-40 | 5 | 5.5 | 40 | 13.5 | 40 | 6 | 25 | 15.5 | 5 | 14 | 18 |
| GN.77803 | GN 113.7-5-45 | 5 | 5.5 | 40 | 13.5 | 45 | 6 | 25 | 15.5 | 5 | 14 | 18 |
| GN.77804 | GN 113.7-5-50 | 5 | 5.5 | 40 | 13.5 | 50 | 6 | 25 | 15.5 | 5 | 14 | 18 |
| GN.77805 | GN 113.7-5-60 | 5 | 5.5 | 40 | 13.5 | 60 | 6 | 25 | 15.5 | 5 | 14 | 18 |
| GN.77806 | GN 113.7-5-70 | 5 | 5.5 | 40 | 13.5 | 70 | 6 | 25 | 15.5 | 5 | 14 | 18 |
| GN.77807 | GN 113.7-5-80 | 5 | 5.5 | 40 | 13.5 | 80 | 6 | 25 | 15.5 | 5 | 14 | 18 |
| GN.38956 | GN 113.7-6-10 | 6 | 7 | 40 | 13.5 | 10 | 7.1 | 25 | 15.5 | 6 | 21 | 15 |
| GN.38957 | GN 113.7-6-15 | 6 | 7 | 40 | 13.5 | 15 | 7.1 | 25 | 15.5 | 6 | 21 | 15 |
| GN.38958 | GN 113.7-6-20 | 6 | 7 | 40 | 13.5 | 20 | 7.1 | 25 | 15.5 | 6 | 21 | 20 |
| GN.38959 | GN 113.7-6-25 | 6 | 7 | 40 | 13.5 | 25 | 7.1 | 25 | 15.5 | 6 | 21 | 20 |
| GN.38960 | GN 113.7-6-30 | 6 | 7 | 40 | 13.5 | 30 | 7.1 | 25 | 15.5 | 6 | 21 | 20 |
| GN.77811 | GN 113.7-6-35 | 6 | 7 | 40 | 13.5 | 35 | 7.1 | 25 | 15.5 | 6 | 21 | 20 |
| GN.38961 | GN 113.7-6-40 | 6 | 7 | 40 | 13.5 | 40 | 7.1 | 25 | 15.5 | 6 | 21 | 25 |
| GN.77812 | GN 113.7-6-45 | 6 | 7 | 40 | 13.5 | 45 | 7.1 | 25 | 15.5 | 6 | 21 | 20 |
| GN.77813 | GN 113.7-6-50 | 6 | 7 | 40 | 13.5 | 50 | 7.1 | 25 | 15.5 | 6 | 21 | 20 |
| GN.77814 | GN 113.7-6-60 | 6 | 7 | 40 | 13.5 | 60 | 7.1 | 25 | 15.5 | 6 | 21 | 20 |
| GN.77815 | GN 113.7-6-70 | 6 | 7 | 40 | 13.5 | 70 | 7.1 | 25 | 15.5 | 6 | 21 | 20 |
| GN.77816 | GN 113.7-6-80 | 6 | 7 | 40 | 13.5 | 80 | 7.1 | 25 | 15.5 | 6 | 21 | 20 |

Indexing and positioning elements

INOX STAINLESS STEEL

| Code | Description | d1-0.04 -0.08 | d2 | d3 | d4 | l1+0.6 | l2±0.2 | l3 | m | Mounting hole H11 | Double sided shearing force [KN] | ⚖️ |
|----------|-----------------|------------------|------|----|----|--------|--------|------|------|----------------------|--|-----|
| GN.77821 | GN 113.7-8-10 | 8 | 9.5 | 48 | 18 | 10 | 8.2 | 31 | 20.5 | 8 | 38 | 30 |
| GN.77822 | GN 113.7-8-15 | 8 | 9.5 | 48 | 18 | 15 | 8.2 | 31 | 20.5 | 8 | 38 | 30 |
| GN.38962 | GN 113.7-8-20 | 8 | 9.5 | 48 | 18 | 20 | 8.2 | 31 | 20.5 | 8 | 38 | 30 |
| GN.38963 | GN 113.7-8-25 | 8 | 9.5 | 48 | 18 | 25 | 8.2 | 31 | 20.5 | 8 | 38 | 35 |
| GN.38964 | GN 113.7-8-30 | 8 | 9.5 | 48 | 18 | 30 | 8.2 | 31 | 20.5 | 8 | 38 | 40 |
| GN.77823 | GN 113.7-8-35 | 8 | 9.5 | 48 | 18 | 35 | 8.2 | 31 | 20.5 | 8 | 38 | 30 |
| GN.38965 | GN 113.7-8-40 | 8 | 9.5 | 48 | 18 | 40 | 8.2 | 31 | 20.5 | 8 | 38 | 50 |
| GN.77824 | GN 113.7-8-45 | 8 | 9.5 | 48 | 18 | 45 | 8.2 | 31 | 20.5 | 8 | 38 | 30 |
| GN.38966 | GN 113.7-8-50 | 8 | 9.5 | 48 | 18 | 50 | 8.2 | 31 | 20.5 | 8 | 38 | 100 |
| GN.77825 | GN 113.7-8-60 | 8 | 9.5 | 48 | 18 | 60 | 8.2 | 31 | 20.5 | 8 | 38 | 30 |
| GN.77826 | GN 113.7-8-70 | 8 | 9.5 | 48 | 18 | 70 | 8.2 | 31 | 20.5 | 8 | 38 | 30 |
| GN.77827 | GN 113.7-8-80 | 8 | 9.5 | 48 | 18 | 80 | 8.2 | 31 | 20.5 | 8 | 38 | 30 |
| GN.77828 | GN 113.7-8-90 | 8 | 9.5 | 48 | 18 | 90 | 8.2 | 31 | 20.5 | 8 | 38 | 30 |
| GN.77829 | GN 113.7-8-100 | 8 | 9.5 | 48 | 18 | 100 | 8.2 | 31 | 20.5 | 8 | 38 | 30 |
| GN.77831 | GN 113.7-10-15 | 10 | 12 | 48 | 18 | 15 | 9.6 | 31 | 20.5 | 10 | 60 | 40 |
| GN.38967 | GN 113.7-10-20 | 10 | 12 | 48 | 18 | 20 | 9.6 | 31 | 20.5 | 10 | 60 | 40 |
| GN.38968 | GN 113.7-10-25 | 10 | 12 | 48 | 18 | 25 | 9.6 | 31 | 20.5 | 10 | 60 | 40 |
| GN.38969 | GN 113.7-10-30 | 10 | 12 | 48 | 18 | 30 | 9.6 | 31 | 20.5 | 10 | 60 | 50 |
| GN.77832 | GN 113.7-10-35 | 10 | 12 | 48 | 18 | 35 | 9.6 | 31 | 20.5 | 10 | 60 | 40 |
| GN.38970 | GN 113.7-10-40 | 10 | 12 | 48 | 18 | 40 | 9.6 | 31 | 20.5 | 10 | 60 | 60 |
| GN.77833 | GN 113.7-10-45 | 10 | 12 | 48 | 18 | 45 | 9.6 | 31 | 20.5 | 10 | 60 | 40 |
| GN.38971 | GN 113.7-10-50 | 10 | 12 | 48 | 18 | 50 | 9.6 | 31 | 20.5 | 10 | 60 | 70 |
| GN.77834 | GN 113.7-10-60 | 10 | 12 | 48 | 18 | 60 | 9.6 | 31 | 20.5 | 10 | 60 | 40 |
| GN.77835 | GN 113.7-10-70 | 10 | 12 | 48 | 18 | 70 | 9.6 | 31 | 20.5 | 10 | 60 | 40 |
| GN.77836 | GN 113.7-10-80 | 10 | 12 | 48 | 18 | 80 | 9.6 | 31 | 20.5 | 10 | 60 | 40 |
| GN.77837 | GN 113.7-10-90 | 10 | 12 | 48 | 18 | 90 | 9.6 | 31 | 20.5 | 10 | 60 | 40 |
| GN.77838 | GN 113.7-10-100 | 10 | 12 | 48 | 18 | 100 | 9.6 | 31 | 20.5 | 10 | 60 | 40 |
| GN.77839 | GN 113.7-10-110 | 10 | 12 | 48 | 18 | 110 | 9.6 | 31 | 20.5 | 10 | 60 | 40 |
| GN.77840 | GN 113.7-10-120 | 10 | 12 | 48 | 18 | 120 | 9.6 | 31 | 20.5 | 10 | 60 | 40 |
| GN.77851 | GN 113.7-12-20 | 12 | 14.5 | 58 | 24 | 20 | 10.6 | 36.5 | 27.5 | 12 | 87 | 94 |
| GN.38972 | GN 113.7-12-25 | 12 | 14.5 | 58 | 24 | 25 | 10.6 | 36.5 | 27.5 | 12 | 87 | 94 |
| GN.38973 | GN 113.7-12-30 | 12 | 14.5 | 58 | 24 | 30 | 10.6 | 36.5 | 27.5 | 12 | 87 | 100 |
| GN.77852 | GN 113.7-12-35 | 12 | 14.5 | 58 | 24 | 35 | 10.6 | 36.5 | 27.5 | 12 | 87 | 94 |
| GN.38974 | GN 113.7-12-40 | 12 | 14.5 | 58 | 24 | 40 | 10.6 | 36.5 | 27.5 | 12 | 87 | 109 |
| GN.77853 | GN 113.7-12-45 | 12 | 14.5 | 58 | 24 | 45 | 10.6 | 36.5 | 27.5 | 12 | 87 | 94 |
| GN.38975 | GN 113.7-12-50 | 12 | 14.5 | 58 | 24 | 50 | 10.6 | 36.5 | 27.5 | 12 | 87 | 120 |
| GN.38976 | GN 113.7-12-60 | 12 | 14.5 | 58 | 24 | 60 | 10.6 | 36.5 | 27.5 | 12 | 87 | 120 |
| GN.77854 | GN 113.7-12-70 | 12 | 14.5 | 58 | 24 | 70 | 10.6 | 36.5 | 27.5 | 12 | 87 | 94 |
| GN.77855 | GN 113.7-12-80 | 12 | 14.5 | 58 | 24 | 80 | 10.6 | 36.5 | 27.5 | 12 | 87 | 94 |
| GN.77856 | GN 113.7-12-90 | 12 | 14.5 | 58 | 24 | 90 | 10.6 | 36.5 | 27.5 | 12 | 87 | 94 |
| GN.77857 | GN 113.7-12-100 | 12 | 14.5 | 58 | 24 | 100 | 10.6 | 36.5 | 27.5 | 12 | 87 | 94 |
| GN.77858 | GN 113.7-12-110 | 12 | 14.5 | 58 | 24 | 110 | 10.6 | 36.5 | 27.5 | 12 | 87 | 94 |
| GN.77859 | GN 113.7-12-120 | 12 | 14.5 | 58 | 24 | 120 | 10.6 | 36.5 | 27.5 | 12 | 87 | 94 |





INOX STAINLESS STEEL

| Code | Description | d1 -0.04 -0.08 | d2 | d3 | d4 | l1 +0.6 | l2 ±0.2 | l3 | m | Mounting hole H11 | Double sided shearing force [KN] | ⚖️ |
|----------|-----------------|-------------------|------|----|----|---------|---------|------|------|----------------------|--|-----|
| GN.38977 | GN 113.7-16-30 | 16 | 19 | 58 | 24 | 30 | 14 | 36.5 | 27.5 | 16 | 155 | 140 |
| GN.77861 | GN 113.7-16-35 | 16 | 19 | 58 | 24 | 35 | 14 | 36.5 | 27.5 | 16 | 155 | 140 |
| GN.38978 | GN 113.7-16-40 | 16 | 19 | 58 | 24 | 40 | 14 | 36.5 | 27.5 | 16 | 155 | 160 |
| GN.77862 | GN 113.7-16-45 | 16 | 19 | 58 | 24 | 45 | 14 | 36.5 | 27.5 | 16 | 155 | 140 |
| GN.38979 | GN 113.7-16-50 | 16 | 19 | 58 | 24 | 50 | 14 | 36.5 | 27.5 | 16 | 155 | 180 |
| GN.38980 | GN 113.7-16-60 | 16 | 19 | 58 | 24 | 60 | 14 | 36.5 | 27.5 | 16 | 155 | 180 |
| GN.77863 | GN 113.7-16-70 | 16 | 19 | 58 | 24 | 70 | 14 | 36.5 | 27.5 | 16 | 155 | 140 |
| GN.77864 | GN 113.7-16-80 | 16 | 19 | 58 | 24 | 80 | 14 | 36.5 | 27.5 | 16 | 155 | 140 |
| GN.77865 | GN 113.7-16-90 | 16 | 19 | 58 | 24 | 90 | 14 | 36.5 | 27.5 | 16 | 155 | 140 |
| GN.77866 | GN 113.7-16-100 | 16 | 19 | 58 | 24 | 100 | 14 | 36.5 | 27.5 | 16 | 155 | 140 |
| GN.77867 | GN 113.7-16-110 | 16 | 19 | 58 | 24 | 110 | 14 | 36.5 | 27.5 | 16 | 155 | 140 |
| GN.77868 | GN 113.7-16-120 | 16 | 19 | 58 | 24 | 120 | 14 | 36.5 | 27.5 | 16 | 155 | 140 |
| GN.77869 | GN 113.7-16-130 | 16 | 19 | 58 | 24 | 130 | 14 | 36.5 | 27.5 | 16 | 155 | 140 |
| GN.77870 | GN 113.7-16-140 | 16 | 19 | 58 | 24 | 140 | 14 | 36.5 | 27.5 | 16 | 155 | 140 |
| GN.77871 | GN 113.7-16-150 | 16 | 19 | 58 | 24 | 150 | 14 | 36.5 | 27.5 | 16 | 155 | 140 |
| GN.77881 | GN 113.7-20-50 | 20 | 25 | 80 | 34 | 50 | 20.5 | 46.5 | 38 | 16 | 155 | 140 |
| GN.77882 | GN 113.7-20-60 | 20 | 25 | 80 | 34 | 60 | 20.5 | 46.5 | 38 | 16 | 155 | 140 |
| GN.77883 | GN 113.7-20-70 | 20 | 25 | 80 | 34 | 70 | 20.5 | 46.5 | 38 | 16 | 155 | 140 |
| GN.77884 | GN 113.7-20-80 | 20 | 25 | 80 | 34 | 80 | 20.5 | 46.5 | 38 | 16 | 155 | 140 |
| GN.77885 | GN 113.7-20-90 | 20 | 25 | 80 | 34 | 90 | 20.5 | 46.5 | 38 | 16 | 155 | 140 |
| GN.77886 | GN 113.7-20-100 | 20 | 25 | 80 | 34 | 100 | 20.5 | 46.5 | 38 | 16 | 155 | 140 |
| GN.77887 | GN 113.7-20-110 | 20 | 25 | 80 | 34 | 110 | 20.5 | 46.5 | 38 | 16 | 155 | 140 |
| GN.77888 | GN 113.7-20-120 | 20 | 25 | 80 | 34 | 120 | 20.5 | 46.5 | 38 | 16 | 155 | 140 |
| GN.77889 | GN 113.7-20-130 | 20 | 25 | 80 | 34 | 130 | 20.5 | 46.5 | 38 | 16 | 155 | 140 |
| GN.77890 | GN 113.7-20-140 | 20 | 25 | 80 | 34 | 140 | 20.5 | 46.5 | 38 | 16 | 155 | 140 |
| GN.77891 | GN 113.7-20-150 | 20 | 25 | 80 | 34 | 150 | 20.5 | 46.5 | 38 | 16 | 155 | 140 |
| GN.77901 | GN 113.7-25-50 | 25 | 30.8 | 80 | 34 | 50 | 22 | 46.5 | 38 | 16 | 155 | 140 |
| GN.77902 | GN 113.7-25-60 | 25 | 30.8 | 80 | 34 | 60 | 22 | 46.5 | 38 | 16 | 155 | 140 |
| GN.77903 | GN 113.7-25-70 | 25 | 30.8 | 80 | 34 | 70 | 22 | 46.5 | 38 | 16 | 155 | 140 |
| GN.77904 | GN 113.7-25-80 | 25 | 30.8 | 80 | 34 | 80 | 22 | 46.5 | 38 | 16 | 155 | 140 |
| GN.77905 | GN 113.7-25-90 | 25 | 30.8 | 80 | 34 | 90 | 22 | 46.5 | 38 | 16 | 155 | 140 |
| GN.77906 | GN 113.7-25-100 | 25 | 30.8 | 80 | 34 | 100 | 22 | 46.5 | 38 | 16 | 155 | 140 |
| GN.77907 | GN 113.7-25-110 | 25 | 30.8 | 80 | 34 | 110 | 22 | 46.5 | 38 | 16 | 155 | 140 |
| GN.77908 | GN 113.7-25-120 | 25 | 30.8 | 80 | 34 | 120 | 22 | 46.5 | 38 | 16 | 155 | 140 |
| GN.77909 | GN 113.7-25-130 | 25 | 30.8 | 80 | 34 | 130 | 22 | 46.5 | 38 | 16 | 155 | 140 |
| GN.77910 | GN 113.7-25-140 | 25 | 30.8 | 80 | 34 | 140 | 22 | 46.5 | 38 | 16 | 155 | 140 |
| GN.77911 | GN 113.7-25-150 | 25 | 30.8 | 80 | 34 | 150 | 22 | 46.5 | 38 | 16 | 155 | 140 |

Indexing and positioning elements